

Rethink. Rebuild. Renew.

Creating a Sustainable Future for Long Island



Annual Report 2009

The mission of Sustainable Long Island is to promote economic development, environmental health and equity for all Long Islanders, now and for generations to come.



45A Seaman Avenue
Bethpage, NY 11714

T: 516-873-0230

F: 516-873-0706

www.SustainableLI.org

Donate Today!



Dear Friends,

2009 was a year of great progress and persistent success for Sustainable Long Island and numerous communities across our region. New initiatives arose, strong partnerships continued to work together, and numerous steps were taken to reach our goals. I share with you in this report, a list of our notable accomplishments from 2009:

- Completed writing the **Bellport Sustainable Community Plan**, which was officially accepted by the Town of Brookhaven and facilitated regular meetings between the community and Town departments; successfully preventing a number of county-owned properties from being auctioned to outside entities.
- Successfully facilitated a community planning process in **Farmingville**, including preparatory meetings, a best practices tour, focus group sessions, and the community planning weekend during which community members came together to share their visions for the future of Farmingville.
- Conducted a study of **Huntington Station** for the **Huntington Station Brownfield Opportunity Area (BOA) Pre-Nomination Study** and also facilitated two community meetings to ensure that the community residents would be involved in the decision making process in relation to the revitalization of the brownfields in the study area.
- Launched an assessment of the current food system on Long Island to identify challenges and potential solutions dealing with the issue of “**food equity**” – the notion that access to fresh, healthy, affordable food is not universal and that some communities are at a disadvantage in the regional food system.
- Started our first annual **High School Fellowship** program where Long Island students have the opportunity to learn and participate in community-based planning and engage other youth from across the region.
- Held the **Third Annual Sustainability Conference** gathering hundreds of Long Islanders together to learn about economic development and increasing efficiency in suburban governance on Long Island. We also held our **Fall Breakfast Series** continuing dialogue addressing critical issues facing our region, such as brownfields, food equity, and transit oriented development.

Our time and devotion to each project we take on and each community we work in is inspired by the importance of creating a more sustainable Long Island for all of us, now and in future generations.

Thank you to our Board, staff and supporters who make this work possible. I look forward to the year ahead to continue our important work together.

Best Wishes,

Sarah Lansdale

SUSTAINABLE DEVELOPMENT IS THE SOLUTION

Sustainable development is defined as a pattern of resource use that aims to meet human needs while preserving the environment so that these needs can be met not only in the present, but also for future generations.

Sustainability is rooted in equity and justice. Our policy decisions determine who will have access to, share, and control opportunities and wealth in the future.

Sustainable Long Island is a catalyst and facilitator for sustainable development. We cultivate the conditions, identify resources and provide tools to make sustainable development happen on Long Island.

By promoting sustainable development in our region, we can establish a Long Island that can endure in times of financial hardship; that fosters a vibrant economy, healthy environment, and creates opportunities for all.

Sustainable Long Island partners with all community stakeholders, to empower our most distressed communities, the ones that are left out in times of prosperity and are hit the hardest in times of decline, to demand that they be granted access to these basic rights:

- A thriving economy
- A healthy environment
- Access to public transportation
- Clean land, water and air
- A racially and ethnically diverse population
- Parks, community centers and recreational opportunities
- A range of housing options
- Thriving downtowns
- Safe streets & neighborhoods
- Access to quality & affordable food
- Employment opportunities

HOW SUSTAINABLE LONG ISLAND WORKS TO REVITALIZE OUR REGION

Sustainable Long Island partners with Long Island community members and government officials to facilitate execute and implement a unique community planning process that engages stakeholders in a dialogue about the future of their community. Together, these partners identify responsible local solutions to strengthen quality of life for all residents.

Sustainable Long Island provides insight and access to information and resources that equip Long Islanders with the tools necessary to advance sustainable development. Through Sustainable Long Island’s education workshops, community planning weekends, roundtables, conferences, and advocacy work, Long Islanders identify solutions to improve their quality of life and ensure that Long Island continues to be a great place to work, live and play for all.

Through our Sustainable Community Planning process, Sustainable Long Island empowers community members and develops long-term solutions supported by local governments to enhance local businesses and foster economic growth, rejuvenate downtowns, remediate brownfields, improve our air and water quality, preserve open space, beautify communities, create transportation options, and develop a sense of place and pride.

Please see **Page 14** for **How Sustainable Long Island Works with Communities**.

2009 ACCOMPLISHMENTS

In 2009, Sustainable Long Island continued its commitment to progress as its work spanned numerous communities and various projects. Here are some of our successes:

Bellport

During the summer of 2007 Sustainable Long Island facilitated a community planning process in the community now known as Greater Bellport. Working with local organizations and elected officials, Sustainable Long Island facilitated a community visioning process that built upon past planning work in this long neglected community.

Having identified two central issues – the community’s negative image and the crime that plagues residents and businesses - the diverse community came together to outline solutions to these and other problems, including the creation of a hamlet center, improving code compliance, and developing a range of housing options. Sustainable Long Island worked with the Greater Bellport Coalition (GBC) to lay the groundwork to ensure that the Coalition would follow through on the community’s vision. Sustainable Long Island facilitated regular meetings between the community and Town departments and successfully prevented a number of county-owned properties from being auctioned to outside entities.



As a result, GBC has engaged the wider community to join committees and ensure that projects, ranging from implementing safety improvements to park renovations, are completed. In April 2009 the Town of Brookhaven officially accepted the Greater Bellport Sustainable Community Plan as a community vision plan, recognizing the importance of the community's vision and hard work and paving the way for continued implementation. GBC continues to be active in the community, meeting regularly and fulfilling its mission to improve and revitalize the Greater Bellport area.

We continue to work with the Greater Bellport Coalition to advance implementation of the community plan through various projects and initiatives. The Coalition continues to work with the Town and County and has been actively engaged in redevelopment of a local park and discussing the creation of a transit-oriented development near the LIRR station. Sustainable Long Island also invited the Greater Bellport Coalition to participate in the Food Equity Advisory Committee and initiated discussions with the Coalition about possible implementation of one of the recommendations of the Sustainable Community Plan – a community farmers' market.

Elmont

Elmont is a small, diverse community at 3.4 square miles and just over 30,000 residents. Elmont, an unincorporated hamlet, serves as the gateway to Nassau County and Long Island and is home to Belmont Racetrack. In 2006, after years of suburban development, the Elmont community expressed a strong desire to improve and to enhance the suburban condition and quality of life. For the first time ever, Nassau County, the Town of Hempstead and the Elmont community came together with the help of Sustainable Long Island and Saccardi & Schiff to carry out a community planning process designed to build consensus through the creation and implementation of a common plan that serves

as a roadmap for future development along Hempstead Turnpike. The goals of the planning process is to create a unique look for Elmont through development around Belmont Race Track, fostering economic development, facilitate community revitalization, and creating a range of housing options.

Sustainable Long Island helped form the Elmont Coalition for Sustainable Development, a group created to help guide the community planning process and ensure that the Elmont community had meaningful opportunities to participate in the planning process, as well as to carry out implementation of the community's vision. The Coalition continues to meet on a monthly basis and is instrumental in advancing revitalization throughout Elmont.

Sustainable Long Island continues to work with Elmont Coalition for Sustainable Development, providing technical assistance and strengthening their capacity to lead the way in revitalizing the Hempstead Turnpike corridor, including creation of a zoning overlay district for Hempstead Turnpike. We participated in the community's 2nd annual clean-up day in the fall and met with Chamber of Commerce, Coalition members and Town representatives to initiate a process of creating a business improvement district along Hempstead Turnpike. Sustainable Long Island also continues to provide guidance to the Coalition as they set out to develop a website to enhance communication and community outreach.

Farmingville

Farmingville is a small, unincorporated hamlet in central Suffolk County, near several major north-south thoroughfares and just north of the Long Island Expressway. It has a history as a relatively quiet community, but made national headlines when two day laborers were picked up on the streets of Farmingville and assaulted in 2000. News coverage of the incident has tarnished the community's reputation.

Like many communities across Long Island, Farmingville has seen an influx of recent immigrants, particularly from Latin America, causing tensions in the community, which has been divided over the issue of immigration and the presence of day laborers. Recently some of the heat surrounding this issue has dissipated, but hard feelings still remain. One of the goals of the Farmingville Community Planning Process was to bring a divided community together, to build consensus in a community of diverse ideas through the creation and implementation of a sustainable community plan. The project gave hope to community residents that it would help unify the community and create a new, more positive image for Farmingville. This project presented an opportunity to bring people together, focusing on positive change and proactive planning for the future, rather than on the issues that divide the community.



In 2009, Sustainable Long Island successfully facilitated a community planning process, including preparatory meetings, a best practices tour, focus group sessions, and the community planning weekend during which community members came together to share their visions for the future of Farmingville. Community members expressed their desires for calmer traffic along Horseblock Road; increased pedestrian and bicycle safety; more parks and recreation areas with a variety of activities for all ages; landscaping and beautification; and a revitalized hamlet center with landscaping, street furniture such as benches, lighting and trash cans, and an assortment of locally-owned businesses.

Freeport

The Village of Freeport is a diverse community with waterfront to the south and industry to the north. There is

wonderful opportunity for revitalization and investment in the North Main Street Corridor, which runs from the LIRR station to the northern border of Freeport and Roosevelt, as this area typifies a condition prevalent across Long Island: the declining commercial strip.

As Long Islanders become increasingly concerned about losing their next generation to places with greater economic opportunities, more affordable housing, less congestion and more vibrant downtowns; places like the North Main Street Corridor have the potential to solve these problems.

In 2009, Sustainable Long Island, along with Moule and Polyzoides and Regional Planning Association, successfully won the request for proposal (RFP) process to conduct the community planning process for the North Main Street Corridor Master Plan in Freeport. We organized a Steering Committee to oversee and inform the community planning process, conducted targeted outreach to ensure public participation and facilitated a design charrette over three days in late October. Through site visits, presentations, meetings and open studios, Sustainable Long Island and our project partners helped community members explore transit-oriented development and create recommendations for the plan.

Middle Country

Spawned by local interest in improving the quality of life and addressing significant safety issues along State Route 25, Sustainable Long Island facilitated a Sustainable Community Planning Process in 2006 for the communities of Selden and Centereach, collectively known as Middle Country. Sustainable Long Island worked with the Coalition, Town of Brookhaven, and other local partners and elected officials to complete the Sustainable Community Plan for Middle Country.

In 2009, Sustainable Long Island continues to work with the Middle Country Coalition for Smart Growth (MCCSG), providing technical assistance and guidance, with a number of recommendations and implementation steps from the Sustainable Community Plan underway. In the spring, MCCSG held the first annual community celebration, at which Sustainable Long Island presented an overview of the community plan. We also helped facilitate a community retreat and provided guidance as the Coalition revised its structure and reviewed its priorities.

Roosevelt

Following the community visioning process in 2002, Sustainable Long Island helped draft a community revitalization and economic development plan for Roosevelt. In 2007, the Roosevelt Community Revitalization Group (RCRG) recommitted to the goals of revitalization along Nassau Road – successfully beginning to beautify the streetscape, adding a “Welcome to Roosevelt” sign, brick sidewalks and a brand new community clock.

In 2009, Roosevelt broke ground on a brand new bank, Bethpage Federal Credit Union. The community received funding from Nassau County for roadway improvements and funding from the Hagedorn Foundation to move forward the Hub project. The original aim of the Hagedorn Hubs project in Roosevelt was to construct an environmentally and financially sustainable building with a commercial anchor, non-profit shared space and affordable housing units. However, this has shifted to ensure that the vision and needs of the community are met through further input and engagement. In the meantime, Roosevelt Community Revitalization Group released a request for proposal for a real estate advisor, interviewed three companies and hired Economic Research Associates (ERA). It has identified several potential properties, both publicly and privately owned, for the project site and is in the process of determining which will be the best fit.



Wyandanch

Since 2003, Sustainable Long Island has partnered with the Wyandanch community towards the hamlet’s revitalization goals. In 2004, the Wyandanch Vision Plan was adopted by the Town of Babylon. From \$40,000 invested from the Town of Babylon for community planning, \$10 million has resulted for infrastructure improvements.

“Wyandanch Rising,” the community planning process in Wyandanch, identified innovative strategies for downtown revitalization that would transform the hamlet’s main street, Straight Path, into a vibrant corridor with a diversity of uses. Sponsored by the Town of Babylon in partnership with Sustainable Long Island, the process empowered community members and inspired a vision plan founded on Smart Growth principles. Its success in fostering public participation and incorporating brownfield redevelopment - the plan recommended and initiated the Brownfield Opportunity Area (BOA) Program Nomination Study – which won Wyandanch Rising recognition by the New York State Department of State, who awarded it a Spotlight Community designation. In March 2009, Wyandanch was host to a Brownfields Smart Growth Spotlight Community Workshop, which was attended by New York Secretary of State Lorraine A. Cortés-Vázquez.

ADVOCACY

Brownfields

Sustainable Long Island recognizes that brownfields redevelopment is the future of growth on Long Island. We map brownfields where they occur in Nassau and Suffolk Counties, advocate for redevelopment legislation, promote redevelopment in communities where they facilitate downtown revitalization, and always strive to move redevelopment forward.

Sustainable Long Island continues to lead our region in brownfield education, advocacy, and implementation – in a long term effort dedicated to reducing the approximately 6,800 sites currently on Long Island.

Huntington and Village of Hempstead BOA Pre-Nomination Studies

In 2009, Sustainable Long Island conducted a study of Huntington Station for the Huntington Station Brownfield Opportunity Area (BOA) Pre-Nomination Study. It also facilitated two community meetings to ensure that the community residents would be involved in the decision making process in relation to the revitalization of the brownfields in the study area. As a result of the meetings, it was decided that the Huntington Station BOA would allow for economic development and environmental improvements by promoting and maintaining the positive qualities existent in the Huntington Station Community. The five great things identified by the community included: 1) diversity; 2) potential; 3) transportation; 4) quaint single

family homes/community; and 5) walkability. Sustainable Long Island will continue its involvement in Huntington Station’s Phase II BOA. Sustainable Long Island was also involved with the Village of Hempstead’s BOA Pre-Nomination Study. Sustainable Long Island convened the stakeholders and strategized in engaging community members in participating in the revitalization of the study area.

Also in 2009, we held a Brownfields Breakfast event and organized a panel of experts to discuss the benefits of allowing New York State Class 2 Superfund sites into a voluntary brownfield program. We met with Long Island municipalities to promote BOA applications as well as offer technical assistance.

Food Equity



Community members have repeatedly expressed a need for better access to fruits, vegetables and other healthy foods. In researching and planning activities community members have envisioned farmers markets in underutilized parking lots and new supermarkets where

none existed before. Sustainable Long Island recognizes that access to fresh, healthy food is a critical and often unmet need.

During the summer of 2009, Sustainable Long Island launched an assessment of the current food system on Long Island to identify challenges and potential solutions. The starting point has been the issue of “food equity” – the notion that access to fresh, healthy, affordable food is not universal and that some communities are at a disadvantage in the regional food system. Communities with limitations in resources, disposable income, language, and transportation often have restricted access to, and knowledge about, a variety of healthy food options.

In 2009 Sustainable Long Island met with representatives of Nassau County to discuss creation of community gardens throughout the County and soon launched a Food Equity

Advisory Committee – a diverse group of representatives from across the food system on Long Island. We hired consultant Karen Karp to help with research, data collection, and conduct an initial assessment of food equity on Long Island, along with a three-year plan with recommendations for next steps and project implementation.

We also held our first-ever breakfast forum on food equity on Long Island, where we convened dozens of people representing the agriculture, health, government, education, community/civic, and food industry sectors to provide a snapshot of food equity and health data, hear from a panel of experts about national and local issues, and share questions and concerns.

High School Fellowship

June 2009 marked the start of Sustainable Long Island’s first High School Fellowship program. Integral to the planning of Long Island is the participation of youth in planning. Through this Fellowship, participants had the opportunity to learn and participate in community based planning and engage other youth from across the region. The young adults are smart, creative and hard working. They have taken ownership of the fellowship and completed their work with excellence and professionalism. The inaugural class included:

- Rachel Kaufman
- Adam Roberts
- Colby Sim

The high school students started the Fellowship participating in C.W. Post’s week long Environmental Citizenship Institute and continued to meet with the Deputy Director to complete numerous literature reviews and projects related to sustainability and planning. In addition, they participated in a variety of meetings including the Long Island Regional Planning Council as well as a local meeting featuring Governor Patterson. In the Fall of 2009 the Fellows developed the youth component to the Farmingville Visioning Weekend including conducting outreach to youth. The Fellowship program was highly successful and the Fellows learned many valuable lessons in community development.

Some quotes from the students:

“Learning all about these issues not only made me more aware of the environment, but it got me excited about making and promoting change within the environment. I never realized how threatened our planet really was until

now, and I hope that with this knowledge that I was able to take from the Citizenship, I can find my own ways to help change the careless and wasteful attitudes of today's society." - Regarding CW Post's Environmental Citizenship Institute.

"I absolutely loved meeting with Clara Eromosele this past Thursday! She was so nice and very easy to talk to. She brought up the matter to us that it's very important to her that youth involvement becomes a major factor in the community outreach projects in Roosevelt and Freeport. Being a Roosevelt resident herself, she knows both areas very well and she feels that the kids really don't have enough say in the planning of their communities in either town. Any way to get kids interested in what's going on in their communities here in Freeport and Roosevelt would really aid Clara's community outreach efforts." -Regarding meeting with one of our community partners.

"(We) were brought to a county legislative meeting, in which we all stood up and introduced ourselves to the county officials, explaining our interest in getting the youth involved in our own communities. This was also a thrilling experience, as I had previously never spoke in front of major officials before, and can now see myself as more able to speak publicly. Also on this day, we drove to a Press Conference at Nassau BOCES Reading Center, where Governor Patterson was confirming a 1 million dollar grant to help the school program progress. We watched the media shoot hard-hitting questions, and saw the Governor retaliate, all but a few short feet away. We also met and shook hands with the Suffolk County executive." - Regarding various activities.

Community Roundtables

Sustainable Long Island continued its successful Community Roundtables program in 2009. The goal of these sessions is to strengthen the capacity of partner organizations dedicated to community revitalization, to equip community leaders with resources, ideas and tools and to provide an opportunity to learn from others' experiences.

Community Leadership Retreat

The community roundtable of 2009 was a community leadership retreat, which was held in September and facilitated by Sustainable Long Island in partnership with the Long Island Center for Nonprofit Leadership at Adelphi University. The topics of the retreat included reviewing best practice case studies from groups undertaking community revitalization efforts across the country, strategic plan

development, working with local officials and strategies in engaging entire communities. The retreat was very successful with great survey results, and the community partners left the meeting with tools and skills to help them strengthen and sustain their local community groups. According to one of the community leaders who attended this training, "I took lots of notes that I hope to use for a community fair."

LONG ISLAND'S THIRD ANNUAL SUSTAINABILITY CONFERENCE



Sustainable Long Island held its renowned Third Annual Sustainability Conference on Friday, May 29, 2009. Over 400 attendees including architects, builders, community members and activists, government officials, educators, business leaders and other stakeholders gathered to learn more about economic development in challenging times, creating a competitive region, and increasing efficiency in suburban governance on Long Island.

This year's conference honored Amy Hagedorn, past Board president and founding member of Sustainable Long Island. Also recognized for their leadership in Sustainability were U.S. Congressman Steve Israel, New York's 2nd District; Christine Conniff Sheahan, *Networking Magazine*; and Jody Kass, New Partners for Community Revitalization.

Interactive workshops, a plenary featuring Long Island's college and university presidents, and a ground-breaking bus tour through Hicksville demonstrated the importance and potential of sustainable community planning practices. Our "Sustainable Samplings" lunch featuring dozens of Long Island's premier restaurants offered a taste of their signature dishes. Attendees experienced first-hand how

Sustainable Long Island advances economic development, environmental health and social equity opportunities.

FALL BREAKFAST SERIES



In the second year of our Breakfast Series, Sustainable Long Island continued the dialogue addressing critical issues facing our region, such as brownfields, food equity, and transit oriented development.

Brownfields

Held at National Grid's Melville Learning Center, the first meeting in the 2009 Fall Breakfast Series was a thought provoking forum that addressed the growing concern around brownfields. A panel of experts discussed their views on the issues and concerns that need to be addressed to prevent abuses of the system while concentrating on a model that best cleans up contaminated sites for redevelopment. The conversation also highlighted the benefits of allowing New York State Class 2 Superfund sites into a voluntary brownfield program. Guest speakers in attendance included New York State Senator Carl L. Marcellino, North Hempstead Town Supervisor Jon Kaiman, and City of Glen Cove Mayor Ralph V. Suozzi. Also part of the interactive panel was Frederick Eisenbud, Esq., Attorney, Law Offices of Frederick Eisenbud; Clara Gillens-Eromosele, Community Liaison, Roosevelt Community Revitalization Group; and Val Washington, Deputy Commissioner, New York State Department of Environmental Conservation.

Food Equity

A panel representing a cross-section of the food system on Long Island convened at Old Bethpage Village Restoration, home to one of Long Island's leading farmers' markets, to identify challenges our region faces accessing healthy and affordable food. Joseph Gergela, Long Island Farm Bureau; Gwen O'Shea, Health & Welfare Council; Nevin Cohen, Ph.D., Assistant Professor of Environmental Studies and Co-Chair, Tishman Environment and Design Center Eugene Lang College, The New School for Liberal Arts; and Sarah Eichberg, Ph.D., Director of Community Research for Vital Signs and

the Center for Social Innovation, Adelphi University were featured speakers. This meeting, the first of its kind in our region, raised awareness of the growing percentage of our neighbors who lack access to affordable healthy foods such as fresh fruits and vegetables and other minimally processed foods that are necessary to sustain a healthy lifestyle.

The goals of this meeting were to encourage participants to begin developing a vision for a healthy, sustainable food system for Long Island, to identify issues that need to be addressed, and to identify future necessary research and opportunities for collaboration. Karen Karp of Karp Resources moderated the discussion, which introduced food equity as a catalyst for examining the food system on Long Island and presented the first round of data and findings on food, population, land, and health.

Transit Oriented Development

Experts including Mitch Pally, Weber Law Group LLP; Mindy Germain, Executive Director, Residents for a More Beautiful Port Washington; Honorable Frank Petrone, Supervisor, Town of Huntington; and Robert Paley, Director, Transit Oriented Development, Metropolitan Transportation Authority, discussed creating synergies between transit, commerce and community to create more vibrant train stations that better serve the needs of riders and spur our regional and local economies in the last of Sustainable Long Island's 2009 Fall Breakfast Series.

In many Long Island towns, train stations sit adjacent to community focal points, in or near our downtowns. Revitalized train stations attract riders, help reduce reliance on car travel, promote compact development patterns and spur economic development. They can transform passenger experiences and downtown areas, adding value to train trips, stations and to communities, providing linkages to neighboring communities, serving as economic engines. The panel took a closer look into how to recondition train stations in Long Island communities and began to identify creative solutions to help communities connect people with local assets and incite economic activity.



We couldn't do it without you!

Thank you to all of our supporters in 2009. Your contribution helps us promote economic development, environmental health and social equity in communities across Long Island.

Adelphi University
 Mr. & Mrs. Edward K. Adler
 AECOM
 AKRF
 Albanese Organization
 Alure Home Improvements
 Sal Ambrosino
 Ed & Lori Andrade
 Anton Community Newspapers
 AON Risk Services, Inc. of New York
 Astoria Federal Savings
 AvalonBay Communities, Inc.
 Ann & Len Axinn
 Ayhan's Shish Kebab Restaurant
 B. Thayer Associates
 Babylon Carriage House Restaurant
 Stephen Baxley
 Benjamin Moore Paints
 Pam & Gene Bernstein
 Bessemer Trust
 Bethpage Federal Credit Union
 Bonnie Michelle Catering
 Barbara & Fred Bornstein
 Brasserie Persil Restaurant
 Brookhaven National Laboratory
 Robert & Nancy Brooks
 Building Long Island
 CA Rich Environmental Specialists
 Cameron Engineering & Associates, LLP
 Capital One Bank
 Carlyle on the Green
 Miriam & Robert Caslow
 Cerini & Associates, LLP
 Chartwells Restaurant
 Citi
 Clean Air NY
 Jean Lahage Cohen
 Community Advocates
 Continental lighting
 Louis J. Croce
 Margaret Cuomo Maier
 Di Maggio's Trattoria
 Richard & Patricia Dina
 Nancy Rauch Douzinas
 EMTEC Consultants
 Howard M. Esterces
 Fancy Fixtures Inc.

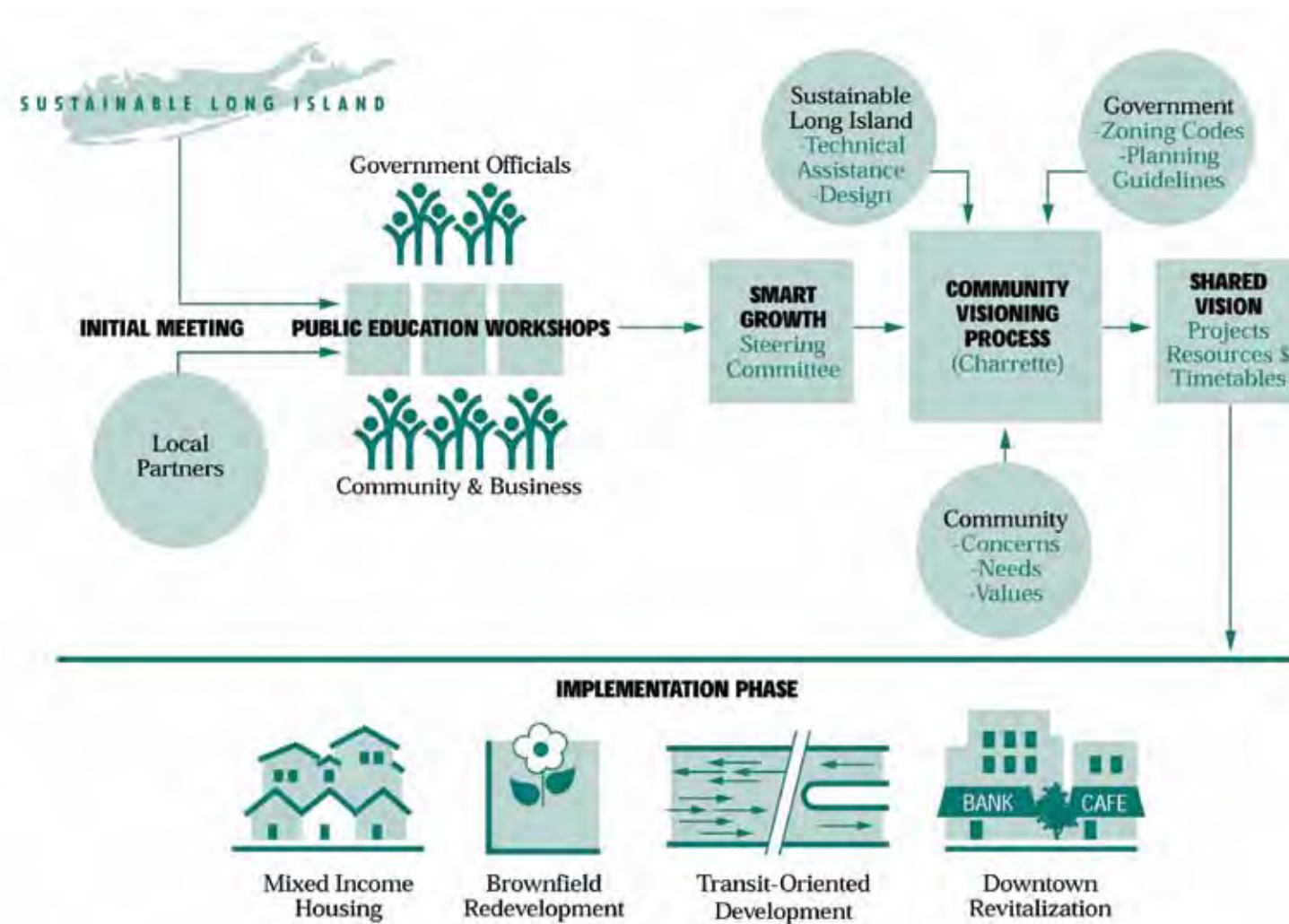
Farrell Fritz
 Sandra Feinberg
 Grassroots Environmental Education
 Gloria & Dick Grafer
 Greentree Foundation
 Nancy Grover
 Amy Hagedorn
 Hammer Magazine
 Harbor Q Restaurant
 Hicks Nurseries
 Hofstra University
 Scott & Angela Jaggar
 Joel E. Sammet & Company
 JP Morgan Chase Foundation
 William B. Kuhl, FASLA
 La Piccola Liguria
 Ms. Sharon Maier-Kennelly
 Landmark On Main Street
 Landscape Forms, Inc.
 Landscape Structures
 Sarah Lansdale
 Levitt Foundation
 LIPA
 Long Island Community Foundation
 Long Island Fund for Women and Girls
 Long Island Progressive Coalition
 Long Island Transportation Management
 Louie's Oyster Bar & Grill
 Howard Maier
 Main Street Nursery
 Ann Mallouk
 Carolyn & Maurice Mandel
 Mascali's Restaurant
 Maxwell's Restaurant
 Mary A. McCaffery
 Mercy First
 Kristin & John Miller
 Miller Environmental Group
 Miss Janet's Kitchen
 Marilyn Monter & Wilfried Witthuhn
 Nassau Community College
 National Grid
 Neighborhood Network
 Networking Magazine
 New York Institute of Technology
 New York State Council on the Arts
 Newsday

North Shore Long Island Jewish Health System
 George O'Neill
 Penn Toyota, Ltd.
 Pinewood Perennials
 Steven & Jean-Marie Posner
 Queen of Hearts
 Queens College
 Anna Marie Quinlan
 Dr. Greta M. Rainsford
 Rauch Foundation
 Arlene & Bernard Richards
 Jennifer Rimmer
 Rivkin Radler
 Robkes Country Inn
 Marge & Peter Rogatz
 Roots Restaurant
 Roslyn Savings Foundation
 Mr. David B. Schiff Saccardi & Schiff, Inc.
 Patricia P. Sands
 Nate Berry
 Sandy River Charitable Foundation
 Sapienza's Bakery
 Saratoga Associates
 F. William Schmergel
 Jane & Marty Schwartz
 Dr. Robert A. Scott
 Mrs. Edward M. Shepard
 Jerry & Cecile Shore
 Robin & David Sigman
 Site Specialists
 Smith and Hawken
 St. Joseph's College
 Erwin P. & Pearl F. Staller
 Starkie Brothers Nursery
 State Bank of Long Island
 Stony Brook University
 Denise & Charlie Strain
 Suburban Eats
 Suffolk County Community College
 Suffolk County National Bank
 SUNY College at Old Westbury
 Sweet Karma Desserts
 The Melting Pot Restaurant
 The Metropolitan Restaurant
 The Scotts Miracle-Gro Company
 The Treiber Group LLC
 Erin Thoresen
 Tutto Pazzo
 Unitarian Universalist Congregation At Shelter Rock
 Lisa Valentine
 Reinhardt & Nancy Van Dyke
 Verizon Foundation
 VHB Engineering
 Victor Stanley
 Patricia Vunk
 Wachovia
 Kenneth L. Wessel
 Wrap it up Grill
 Elaine & Leonard Wurzel
 Lloyd P. Zuckerberg



*This is a list of donors who have completed a donor recognition form. We thank all of our donors for their continued support.

How Sustainable Long Island Works With Communities



2009 Board of Directors

Thank you to the Directors who served on Sustainable Long Island's Board in 2009. We wish a fond farewell to Nate Berry, Nadia Marin-Molina, and John Miller, who stepped down from the Board of Directors this past year and thank them for their continued support of Sustainable Long Island.

Russ Albanese
Albanese Organization

Lauren Furst
Pathways to Wealth

John Miller

Lennard Axinn*
Island Estates

H. Richard Grafer*
Pathway Investments, LLC

Ruth Negrón-Gaines

Nate Berry
Sandy River Charitable Foundation

Amy Hagedorn
Hagedorn Foundation

George O'Neill
Meriwether Capital Corporation

Charlotte Biblow
Farrell Fritz, P.C.

David Kapell

Mitch Pally

Peter Bogan

Jeff Kraut

Robert Wieboldt

Michelle DiBenedetto

Nadia Marin-Molina
The Workplace Project

* Executive Committee Members

Donald Fiore
Local 24 IBEW

Kevin McDonald
The Nature Conservancy



We proudly welcome Ruth Negrón-Gaines (at right) as the new President of Sustainable Long Island and recognize Amy Hagedorn's (at left) contributions as President for a better part of a decade. As Board President, Amy has overseen countless visioning processes, partnerships, and planning efforts across Long Island. Along with Sustainable Long Island, she has worked with numerous communities to craft a plan for sustainable development, helped promote the cleanup and redevelopment of brownfields, advocate policies at the local and state level, and identify a model that prioritizes economic growth, environmental health, and equal opportunity for all Long Islanders. The Board and staff look forward to continuing to work with Amy. Her involvement has impacted the lives of thousands of Long Islanders and her hard work, genuine personality, and gracious contributions will benefit our region for years to come.

Sustainable Long Island, Inc. and Affiliated Entities Consolidated Statement of Financial Position

2009

ASSETS	Sustainable Long Island, Inc.	Long Island Fund for Sustainable Development, Inc.	Eliminations	Total
Current Assets:				
Cash and cash equivalents.....	\$ 988,049	\$ 317,410	\$ -	\$ 1,305,459
Contributions and grants receivable.....	217,372	-	-	217,372
Investments.....	-	-	-	-
Management fee receivable.....	-	-	-	-
Current portion of loan receivable, net of allowance.....	-	1,481	-	1,481
Prepaid expenses and other current assets.....	3,967	-	-	3,967
TOTAL CURRENT ASSETS	1,209,388	318,891	-	1,528,279
Other assets.....	4,392	-	-	4,392
Note receivable, net of current portion and allowance.....	-	-	-	-
Property and equipment, net of accumulated depreciation.....	12,291	-	-	12,291
TOTAL ASSETS	\$ 1,226,071	\$ 318,891	\$ -	\$ 1,544,962
LIABILITIES AND NET ASSETS				
Current Liabilities:				
Accounts payable and accrued expenses.....	\$ 212,073	\$ 167	\$ -	\$ 212,240
Current portion of note payable, net of reserve.....	-	-	-	-
Loan from affiliate.....	-	-	-	-
TOTAL CURRENT LIABILITIES	212,073	167	-	212,240
Note payable, net of current portion and reserve.....	-	-	-	-
TOTAL LIABILITIES	212,073	167	-	212,240
Commitments and contingencies				
Net Assets:				
Unrestricted.....	1,013,998	68,724	-	1,082,722
Temporarily restricted.....	-	25,000	-	25,000
Permanently restricted.....	-	225,000	-	225,000
TOTAL NET ASSETS	1,013,998	318,724	-	1,332,722
TOTAL LIABILITIES AND NET ASSETS	\$ 1,226,071	\$ 318,891	\$ -	\$ 1,544,962

SUPPORT AND REVENUE:	Sustainable Long Island, Inc.	Long Island Fund for Sustainable Development, Inc.	Eliminations	Total
Contributions.....	\$ 326,827	\$ 11,544	\$ (11,544)	\$ 326,827
Grants and contracts.....	441,453	-	-	441,453
Gross proceeds from special events.....	183,918	-	-	183,918
Less: Direct event costs.....	(68,637)	-	-	(68,637)
Net proceeds from special events.....	115,281	-	-	115,281
TOTAL SUPPORT	883,561	11,544	(11,544)	883,561
Interest income.....	13,027	6,214	-	19,241
Other income.....	(4,663)	40,608	-	35,945
TOTAL REVENUE	8,364	46,822	-	55,186
TOTAL SUPPORT AND REVENUE	891,925	58,366	(11,544)	938,747
EXPENSES:				
Program services:				
Smart Growth Advocacy.....	-	-	-	-
Brownfields Redevelopment.....	48,120	-	-	48,120
Regional Projects.....	114,776	-	-	114,776
Community Revitalization:				
New Initiatives.....	347,943	-	-	347,943
Implementation.....	127,894	-	-	127,894
Long Island Fund for Sustainable Development.....	11,544	49,907	(11,544)	49,907
TOTAL PROGRAM SERVICES	650,277	49,907	(11,544)	688,640
General and administration.....	133,915	-	-	133,915
Fund development.....	100,159	-	-	100,159
TOTAL EXPENSES	884,351	49,907	(11,544)	922,714
CHANGE IN NET ASSETS	7,574	8,459	-	16,033
Net assets, beginning of year.....	1,006,424	310,265	-	1,316,689
Net assets, end of year.....	\$ 1,013,998	\$ 318,724	\$ -	\$ 1,332,722



45A Seaman Avenue
Bethpage, NY 11714

T: 516-873-0230
F: 516-873-0706

www.SustainableLI.org

Rethink the way you connect and become involved
Rebuild communities, partnerships, and friendships
Renew your visions, dreams, and ideas for the future of Long Island

Donate Today!

Sustainability is only a click away!
Follow us on Facebook and Twitter

