

community accomplishments

SUSTAINABLE LONG ISLAND HELPS COMMUNITIES ACROSS LONG ISLAND IDENTIFY PRIORITIES FOR DEVELOPMENT AND DEVELOP PRACTICAL STRATEGIES TO BUILD SAFER, STRONGER, HEALTHIER, AND MORE VIBRANT DOWNTOWNS. OVER THE PAST 12 YEARS, SUSTAINABLE LONG ISLAND HAS PARTNERED WITH OVER A DOZEN COMMUNITIES ACROSS NASSAU AND SUFFOLK COUNTIES RAISING OVER \$500 MILLION IN PUBLIC AND PRIVATE INVESTMENTS.

GREATER BELLPORT (TOWN OF BROOKHAVEN)

Sustainable Long Island partnered with Greater Bellport residents, business and municipal leaders, as well as clergy beginning in 2007, to create a community plan that reflects the values and goals they have for their town. In 2009, the Sustainable Community Plan for the Greater Bellport Community was completed, and formally accepted by the Town of Brookhaven. In 2010 North Bellport was selected as one of the two locations for Sustainable Long Island's youth-run farmers' market; providing fresh fruit and vegetables to community residents. Sustainable Long Island continues to work with the Greater Bellport Coalition to advance implementation of the community plan through various projects and initiatives, including the redevelopment of Robert Rowley Park and discussing the creation of a transit-oriented development near the Long Island Rail Road station.

FARMINGVILLE (TOWN OF BROOKHAVEN)

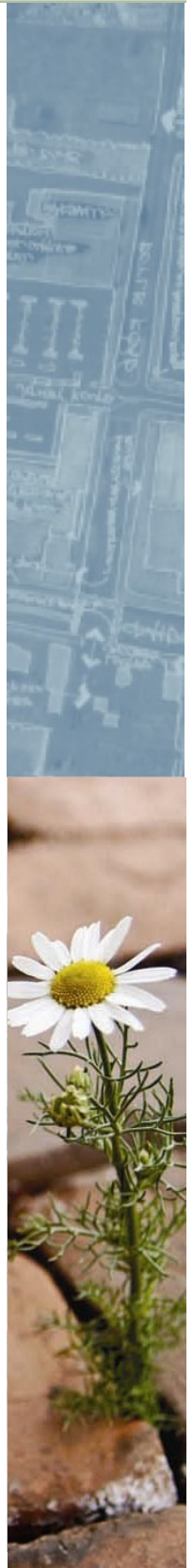
Sustainable Long Island facilitated the Farmingville Community Planning Process in 2009 that included preparatory meetings, a best practices tour, focus group sessions, and a community planning weekend, led by nationally known land use planning expert Dan Burden. Among the goals of the Farmingville Community Planning Process were to bring together a divided community and to build a consensus of diverse ideas through the creation and implementation of a sustainable community plan. The project gave hope to residents that it would help unify the community and create a new, more positive image for Farmingville, while also presenting an opportunity to bring people together, focusing on positive change and proactive, positive participation in the planning process. The core of the Community Plan, which was accepted by the Town of Brookhaven in 2010, is the creation of a revitalized hamlet center along Horseblock Road with landscaping, street furniture such as benches, lighting and trash cans, and a variety of locally-owned businesses.

ELMONT (TOWN OF HEMPSTEAD)

Sustainable Long Island began working with the Elmont community in 2006, focusing on the Hempstead Turnpike between the Nassau/Queens border and Franklin Square, which has become another example of suburban sprawl. In 2008, the Vision Plan was embraced by both the Town of Hempstead and Nassau County. For the first time ever, Nassau County, the Town of Hempstead and the Elmont community came together to carry out a community planning process designed to build consensus through the creation and implementation of a common plan that serves as a roadmap for future development along Hempstead Turnpike. \$40,000 from Town of Hempstead for community planning resulted in \$2.5 million for revitalization of the Argo Theater and \$2.4 million for pedestrian safety improvements. Sustainable Long Island continues to work with Elmont Coalition for Sustainable Development, providing technical assistance and strengthening their capacity to lead the way in revitalizing the Hempstead Turnpike corridor, including creation of a zoning overlay district for Hempstead Turnpike.

FREEPORT (TOWN OF HEMPSTEAD)

In 2009, Sustainable Long Island, along with Moule and Polyzoides and Regional Plan Association, held a community visioning project in Freeport, which brought in 300 residents, and resulted in the revitalization plan, a community coalition of 20 community and civic leaders, and a local government that is aware of the community's issues and desires. In 2010, Sustainable Long Island and project partners submitted the North Main Street Corridor Master Plan for Freeport, which serves as a catalyst for Freeport's Brownfield Opportunity Area Program application process.



community accomplishments

MIDDLE COUNTRY (TOWN OF BROOKHAVEN)

Sustainable Long Island worked collaboratively with the Middle Country Coalition for Smart Growth, Town of Brookhaven, and other local partners and elected officials to complete the Sustainable Community Plan for Middle Country, which was formally adopted by the Town. Sustainable Long Island continues to partner with the Coalition to further organizational development and implementation of the Sustainable Community Plan. \$50,000 from the Town of Brookhaven for community planning resulted in \$143,000 for infrastructure improvements. A number of projects are already underway including sidewalk installations around schools and meetings with LIPA to show support of the Rails-to-Trails project—which will create connections of trails from older rail lines. Some completed projects, include the Town of Brookhaven purchasing the development rights to Hobbs farm, preserving it as an open space and the placement of an electronic community information sign in 2010.

NORTH AMITYVILLE (TOWN OF BABYLON)

In 2010, Town of Babylon Supervisor Steve Bellone responded to the need for comprehensive redevelopment at the intersection of Albany Avenue and Great Neck Road by spearheading the North Amityville revitalization process. To address this need, Sustainable Long Island partnered with the Town to facilitate a community planning process – engaging community members in the decisions made about the future of the study area. The goals of this visioning process were to ensure public participation in the revitalization of the intersection and explore the potential for redevelopment as a mixed-use district. Through a series of community and stakeholder meetings the North Amityville Vision Plan was created, shared with the public for comment, reviewed and edited after identifying redevelopment strategies, and in December 2010 was adopted by the Town Board.

ROOSEVELT (TOWN OF HEMPSTEAD)

Following a visioning process in 2002, Sustainable Long Island helped draft a community revitalization and economic development plan for Roosevelt. In 2007, the Roosevelt Community Revitalization Group (RCRG) recommitted to the goals of revitalization along Nassau Road. The community has successfully begun beautifying the streetscape along Nassau Road, adding a “Welcome to Roosevelt” sign, brick sidewalks and a brand new community clock. In 2009, the community broke ground on a brand new bank, Bethpage Federal Credit Union. In addition, the community has received funding from Nassau County for roadway improvements and funding from the Hagedorn Foundation to move forward the Hub project. In 2010, Sustainable Long Island, in partnership with Long Island Farm Bureau and RCRG, launched a pilot project community youth-run farmers’ market to improve access to fresh produce, while creating jobs for local high school students, enhancing the local economy and fostering a sense of community.

WYANDANCH (TOWN OF BABYLON)

Sustainable Long Island began working with the Wyandanch community in 2003 and one year later, the Wyandanch Vision Plan was adopted by the Town of Babylon. From \$40,000 invested from the Town of Babylon for community planning, \$10 million has resulted for infrastructure improvements. In early 2010, Sustainable Long Island conducted targeted outreach to the Wyandanch community with emphasis on a weeklong charrette process, which would review progress, identify achievements and discuss opportunities and strategies for the implementation of the Wyandanch Rising Project. Sustainable Long Island continues to assist the Town and the community on numerous initiatives, such as creating work-force housing, extending Babylon’s sewer system into the hamlet of Wyandanch, and spearheading a local business association to create support for future economic development in the community.

For more information on our work in each of these communities and in Copiague, Huntington, New Cassel, Port Washington, and more, visit us at www.sustainableli.org!

